

MONACO
S C A F F O L D L T D

Extending your possibilities

SHORING & FORMING

PRODUCT
CATALOGUE

MonacoScaffold.com



About Us

Monaco Global, is an internationally recognized organization with over 40 years experience in manufacturing, and supply of formwork and scaffolding, construction equipment.

Family owned, it takes great pride in creating products sourced from the highest grade materials, that meet the most stringent testing standards required.

Monaco Global export to many countries throughout the world and have branches in Asia, Australia and Canada.

The Canadian branch, Monaco Scaffold Ltd, is based in Toronto, and opened in 2016. Since then, it has gained a reputation, for not only supplying formwork and scaffolding products of the highest quality, but also offering our customers the benefit of the most competitive pricing.

By providing the highest quality, competitive pricing and customer service, second to none, Monaco Scaffold Ltd are your trusted partner for all your formwork and scaffolding requirements.

MONACO
SCAFFOLD LTD
Extending your possibilities

ALUMINUM SHORES



CODE	SIZE	CLOSED	OPEN	EST.WEIGHT
7030	MRP120	0.80m	1.20m	12.4Kg
7031	MRP250	1.45m	2.50m	15.6Kg
7032	MRP350	1.95m	3.50m	20.4Kg
7033	MRP480	2.6m	4.80m	25.8Kg
7034	MRP685	4.30m	6.85m	32.2Kg

POST SHORES



CODE	SIZE	CLOSED	OPEN	EST.WEIGHT
7019	No.0	1.05m	1.83m	28lbs (14.6kg)
7020	No.1	1.60m	2.80m	38lbs (19.3kg)
7021	No.2	1.90m	3.40m	44lbs (22.1kg)
7022	No.3	2.17m	3.97m	50lbs (25.2kg)
7023	No.4	3.10m	4.90m	66lbs (30.0kg)

PUSH-PULL SHORES



CODE	SIZE	CLOSED	OPEN	EST.WEIGHT
7035	pps210	1.30m	2.10m	18Kg
7036	pps260	1.90m	2.60m	21.6Kg
7037	pps300	2.1m	3.00m	22.5Kg
7038	pps450	2.80m	4.8m	32Kg
7039	pps650	4.30m	6.50m	41Kg

ALUMINUM FRAMES



CODE	SIZE	EST.WEIGHT
8177	4'x8'	24.2Kg

ALUMINUM FRAMES



CODE	SIZE	EST.WEIGHT
8175	4'x6'	18.1Kg

ALUMINUM FRAMES



CODE	SIZE	EST.WEIGHT
8173	4'x4'	12.2Kg

ALU. FRAMES CONNECTOR



CODE	SIZE	EST.WEIGHT
8179	60x190.5	0.8Kg

PINS



CODE	SIZE	EST.WEIGHT
8178	3/4"x5"	0.27Kg

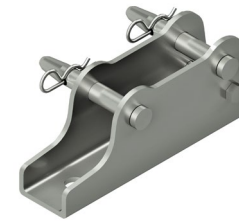
CROSS BRACE



CODE	SIZE (Lacking Spare x Span)	EST.WEIGHT
4211	4'x5'	9.7 lbs
4207	4'x7'	12.27 lbs
4210	4'x10'	16.4 lbs
4208	2'x7'	11.24 lbs
4209	2'x10'	15.4 lbs

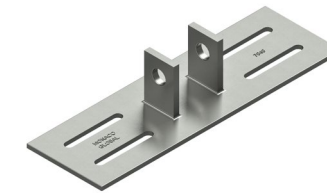
ACCESSORIES

U-SHAPE PLATE



CODE	SIZE	EST.WEIGHT
7042	140/20mm	2.60Kg

HORIZONTAL PLATE



CODE	SIZE	EST.WEIGHT
7041	128*406*6.5	2.55Kg

VERTICAL PLATE



CODE	SIZE	EST.WEIGHT
7040	128*406*6.5	2.55Kg

A CLIP



CODE	SIZE	EST.WEIGHT
7045		0.135Kg

CROSS-HEAD JACK 190



CODE	SIZE	EST.WEIGHT
4057	38*6*700	7.7Kg

CROSS-HEAD JACK 155



CODE	SIZE	EST.WEIGHT
4060	38*6*700	7.3Kg

4

ACCESSORIES

FORMWORK SCREW JACK



CODE	SIZE	EST.WEIGHT
4059	38*5*80	4.9Kg

U-HEAD JACK



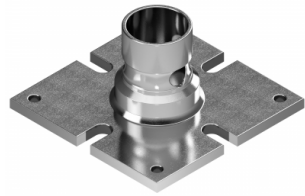
CODE	SIZE	EST.WEIGHT
4058	38*5*700	5.3Kg

J HEAD



CODE	SIZE	EST.WEIGHT
8135	60*4*76	2.3Kg

BASE PLATE



CODE	SIZE	EST.WEIGHT
8133	170*170	2.6Kg

SPINDLE WITH NUT



CODE	SIZE	EST.WEIGHT
8107	48.3*915	5.9Kg

GUARD POST



CODE	SIZE

ELEVATOR COVER PLATE



CODE	SIZE	EST.WEIGHT
	300*300*2.0	1.4Kg

WALLER PLATE



CODE	SIZE	EST.WEIGHT
	127*279*12	3.1Kg

TOP WALLET LIFTING PLATE



CODE	SIZE	EST.WEIGHT
	101*180*12*280	6.7Kg



www.MonacoScaffold.com
Tel: + 1 647 773 8981