

RINGLOCK SYSTEM SCAFFOLD

PRODUCT
CATALOGUE

MonacoScaffold.com



About Us

Monaco Global, is an internationally recognized organization with over 40 years experience in manufacturing, and supply of formwork and scaffolding, construction equipment.

Family owned, it takes great pride in creating products sourced from the highest grade materials, that meet the most stringent testing standards required.

Monaco Global export to many countries throughout the world and have branches in Asia, Australia and Canada.

The Canadian branch, Monaco Scaffold Ltd, is based in Toronto, and opened in 2016. Since then, it has gained a reputation, for not only supplying formwork and scaffolding products of the highest quality, but also offering our customers the benefit of the most competitive pricing.

By providing the highest quality, competitive pricing and customer service, second to none, Monaco Scaffold Ltd are your trusted partner for all your formwork and scaffolding requirements.



VERTICAL STANDARD



CODE	SIZE	EST.WEIGHT
4005	1'6"(500mm)	7.27lbs (3.30kg)
4004	3'3"(1000mm)	12.1lbs (5.50kg)
4003	4'9"(1500mm)	17.1lbs (7.80kg)
4002	6'7"(2000mm)	22lbs (10.00kg)
4000	9'10"(3000mm)	32.1lbs (14.60kg)

LEDGER



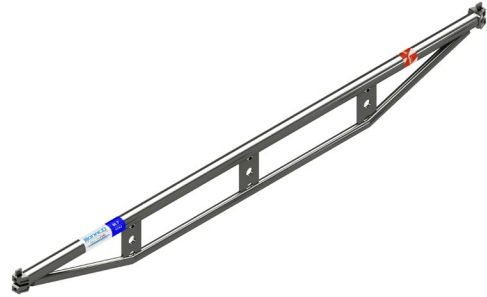
CODE	SIZE	EST.WEIGHT
4015	1'11 ³ / ₄ "(603mm)	6.61lbs(2kg)
4014	2'2"(650mm)	7.16lbs(3.25kg)
4013	2'9"(736mm)	9.04lbs(4.10kg)
4012	3'6"(1065mm)	10.80lbs(4.90kg)
4011	3'10"(1150mm)	11.68lbs(5.30kg)
4010	5'0"(1520mm)	14.55lbs(6.60kg)
4009	5'2"(1570mm)	14.98lbs(6.80kg)
4008	5'4"(1630mm)	15.2lbs(6.90kg)
4007	7'0"(2130mm)	19.3lbs(8.80kg)
4006	10'0"(3050mm)	25.7lbs(11.70kg)

BAY BRACE



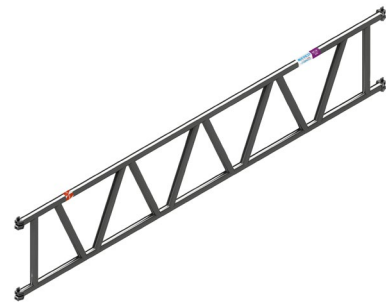
CODE	SIZE	EST.WEIGHT
4024	2'2"(650mm)	21lbs(9.60kg)
4021	3'10"(1150mm)	18.29lbs(8.3kg)
4019	5'2"(1570mm)	19.83lbs(9kg)
4017	7'0"(2130mm)	22.04lbs(10kg)
4016	10'0"(3050mm)	22.57lbs(10.24kg)

DOUBLE LEDGER



CODE	SIZE	EST.WEIGHT
4047	3'10"(1150mm)	23lbs (10.50kg)
4045	5'2"(1570mm)	26lbs (11.82kg)
4043	7'0"(2130mm)	38lbs (17.10kg)
4042	10'0"(3050mm)	50lbs (22.70kg)

TRUSS



CODE	SIZE	EST.WEIGHT
4053	7'0"(2130mm)	63.03lbs (28.60kg)
4054	10'0"(3050mm)	80lbs (36.40kg)
	14' (4260mm)	116lbs (52kg)
	21'(6390mm)	160lbs (73kg)
	28' (8520mm)	220lbs (100kg)

ACCESSORIES

HOLLOW SCREW JACK



CODE	EST.WEIGHT
4027	9.48lbs (4.3kg)

SOLID SCREW JACK



CODE	EST.WEIGHT
4230	12.12lbs (5.5kg)

SWIVEL SCREW JACK



CODE	EST.WEIGHT
4233	12.4lbs (5.6kg)

BASE COLLAR



CODE	EST.WEIGHT
4071	4 lbs (1.81kg)

G-LOCKS



CODE	EST.WEIGHT
4033	

CASTER



CODE	SIZE
4071	8" (200mm)

SIDE BRACKET



CODE	SIZE	EST.WEIGHT
4029	24"	14.5lbs (6.60kg)
4028	12"	8.39lbs (3.8kg)

SYSTEM WALL TIES



CODE	SIZE	WEIGHT
4030	3'	9.25lbs (4.2Kg)
4031	4'	11.68lbs (5.30Kg)
4032	5'	14.1lbs (6.4Kg)

SWIVEL CLAMPS



CODE	SIZE	EST.WEIGHT
1216	2"-2"	2.34lbs (1.06kg)

RIGHT ANGLE CLAMPS



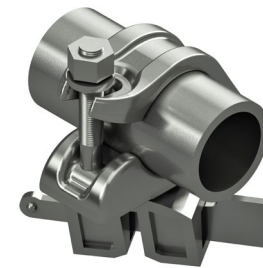
CODE	SIZE	EST.WEIGHT
1236	2"-2"	2.11lbs (0.96kg)

SWIVEL CLAMPS



CODE	SIZE	EST.WEIGHT
1238	2"-3"	4.63lbs (2.10kg)

RIGHT ANGLE ADAPTER CLAMPS



CODE	SIZE	EST.WEIGHT
1272	2"	3.3lbs (1.5kg)

SWIVEL ADAPTER CLAMPS



CODE	SIZE	EST.WEIGHT
1273	2"	3.3lbs (1.5kg)

"U" CLAMPS



CODE	SIZE	EST.WEIGHT
1312	2"	0.98lbs (0.44kg)

TWIN HEAD CLAMPS



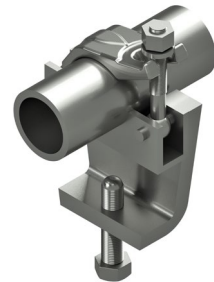
CODE	EST.WEIGHT
1235	2.86lbs (1.30kg)

TOE BOARD CLAMPS



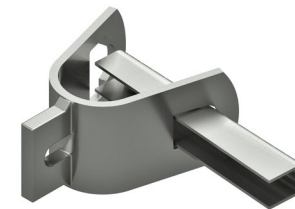
CODE	EST.WEIGHT
1255	3.08lbs (1.40kg)

BEAM CLAMPS



CODE	EST.WEIGHT
1219	2.31lbs (1.05kg)

WALL MOUNT ROSETTE



CODE	SIZE	EST.WEIGHT
1313	2" (4.3)	1.9lbs (0.85kg)

SPIGOT HALF COUPLER



CODE	SIZE	EST.WEIGHT
4073	2" (48.3)	4lbs (1.8kg)

SCAFFOLD EYE BOLT



CODE	SIZE
2058	M16*180mm

EYE BOLT PLUGS



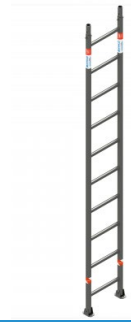
CODE	SIZE
2059	80/16

SCAFFOLD WRENCH



CODE	SIZE	TYPE
11001	19/22	Curve
11000	19/22	Straight

10' ALUMINUM LADDER



CODE	SIZE	EST.WEIGHT
4072	17"x10' (400mmx3048mm)	22 lbs(10kg)

TRAP DOOR & LADDER ALU. PLATFORM



CODE	SIZE	EST.WEIGHT
4141	28"x10'	74lbs
4140	28"x7'	58lbs

ALUMINUM PLATFORM



CODE	SIZE	EST.WEIGHT
4138	19"x24"	17lbs
4135	19"x3'10"	20lbs
4134	19"x5'	26lbs
4131	19"x7'	33lbs
4130	19"x10'	45lbs

SCAFFOLD CAGES



CODE	EST.WEIGHT
4073	215.99lbs (98kg)

SCAFFOLD RACK



CODE	EST.WEIGHT
4072	116.81lbs (53kg)

STEEL PLANKS



CODE	SIZE	EST.WEIGHT
4108	24"	12.47lbs (5.66kg)
4105	3'10"	19.39lbs (8.80kg)
4103	5'2"	24.99lbs (11.34kg)
4101	7'	32.35lbs (14.68kg)
4100	10'	44.41lbs (20.16kg)



www.MonacoScaffold.com
Tel: + 1 647 773 8981